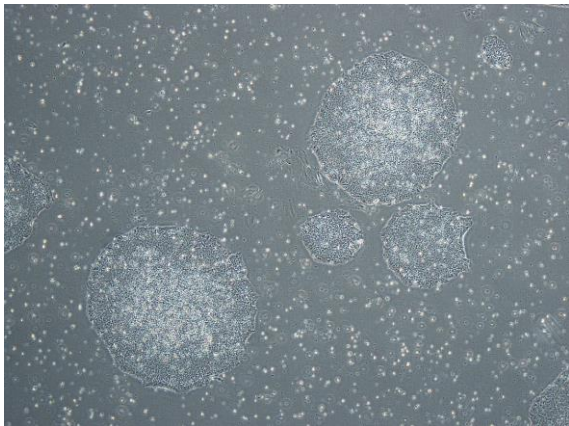
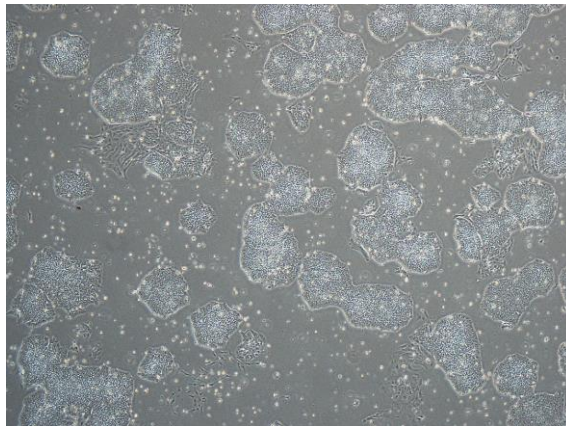


【 CiRA-j-1114 】 Morphology of iPSC colonies

CiRA-j-1114-A: passage-2



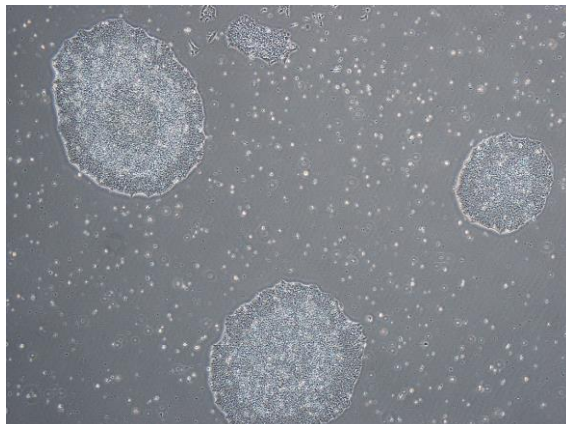
CiRA-j-1114-B: passage-2



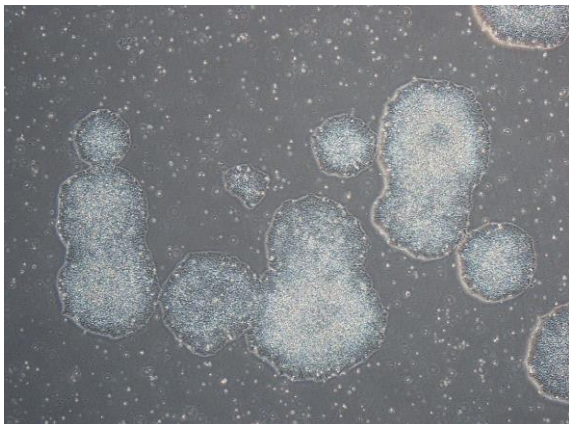
CiRA-j-1114-C: passage-2



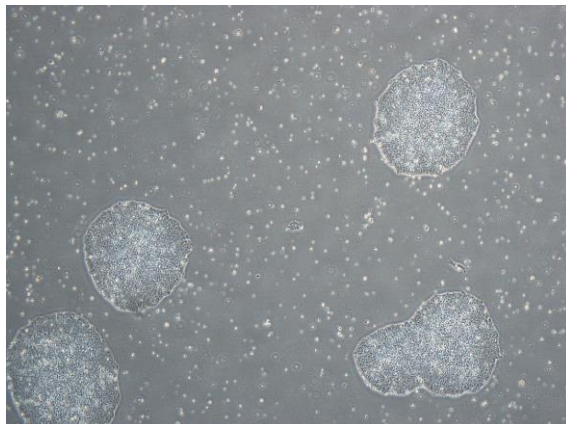
CiRA-j-1114-D: passage-3



CiRA-j-1114-E: passage-3



CiRA-j-1114-F: passage-2



(All images were captured at 4x magnification)